





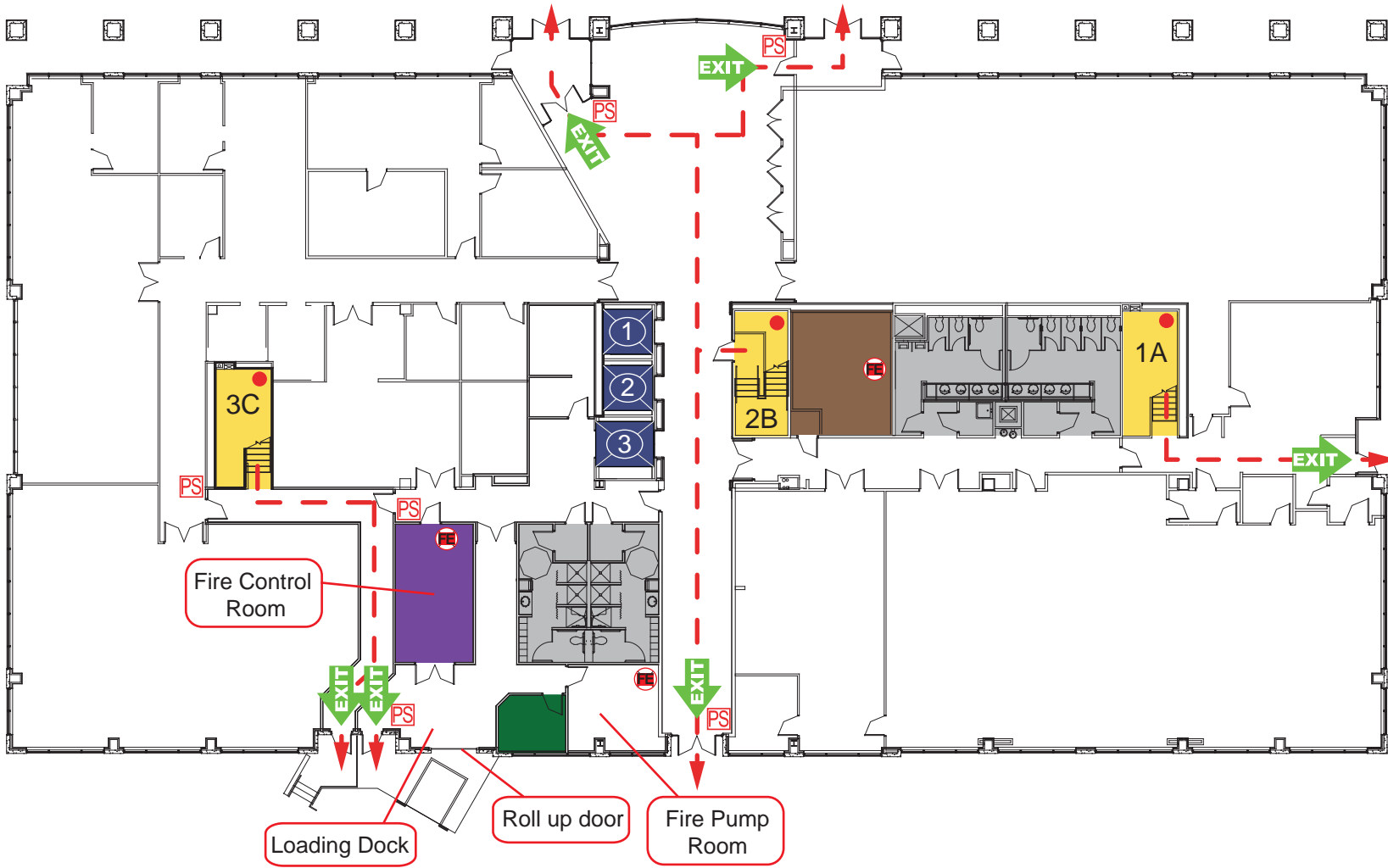
-  Fire Department Apparatus Access
-  Building Occupant Assembly Area
-  Fire Hydrant
-  Fire Department Connection

520 Gaither building footprint marked in yellow. Nearby buildings are shown in dark grey.

Assembly areas:

#1: Parking lot south of 520 building.

#2: Parking lot northeast of the building: Southwest corner of Redland Blvd. and Gaither Road.

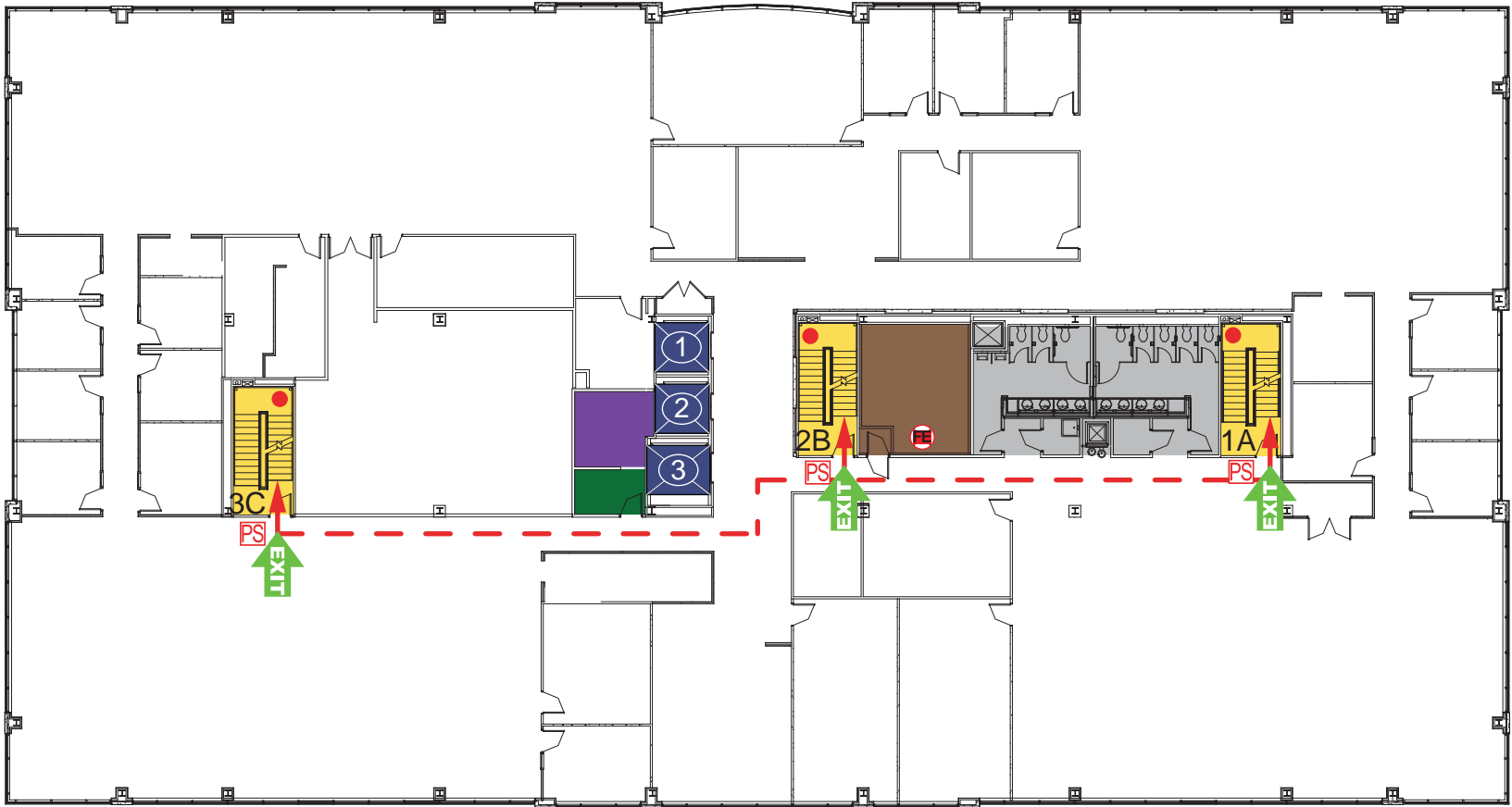


	Exit Stairwell w/ Designation		Standpipe Outlet		Mechanical Room
	Elevator Car w/ Designation		Pull Station		Telephone Closet
	Exit		Fire Extinguisher		Electrical Closet
			Exit Route		Restroom

520 Gaither Road
Rockville, MD 20850



Floor 1



	Exit Stairwell w/ Designation		Standpipe Outlet		Mechanical Room
	Elevator Car w/ Designation		Pull Station		Telephone Closet
	Exit		Fire Extinguisher		Electrical Closet
			Exit Route		Restroom

520 Gaither Road
Rockville, MD 20850



Floor 2
Typical of floors 2 to 6